

# EVMS

Tel : 031)201-2922  
E-mail: kimsuk@khu.ac.kr

1. \_\_\_\_\_

EVM

가 .

가

가

.( )

, CALS

(Commerce at Light Speed)

.( )

가

( )

500

EVM(Earned Value

Management)

가 가

가 ( 38 15,

EVM

2000.3.28)

EVM

EVM

- 가

20

EVM

(CFSR: Contract

Fund Status Report)

- 가)

가

(CPR: Cost Performance

Report), 가/

(C/SSR:

EVM

- 1) 가 ( ) ( )

Cost/Schedule Status Report)

. EVM  
가  
가  
EVMS

EVM

가

2. EVMS

(1) Earned Value Management

EVM (1) “ 가( )

30

(performance measurement), 가/

(C/SCSC: Cost/Schedule Control Systems Criteria)

가C/SCSC

(1983-1987)

EVM

가

( , , )

EVMS EVM

EVM

EVMS

[21314]

EVM (BCWS: Budgeted Cost for Work Scheduled)

(ACWP: Actual

Cost of Work Performed)

ACWP 가 (BCWP: Budgeted Cost for Work Performed)

가EVM

( , )

EVM

< 1> BAC,

BCWS, BCWP, ACWP

가

가

EVMS

< 1> EVM ( )

BAC		
BCWS	/	
BCWP		가 (EV)
ACWP		
BAC: Budgeted cost At Completion		EV: Earned Value

EVM

< 1>

< 2>

WBAC(Working Budgeted

Cost At Completion)

, WBCWS(Working Budgeted Cost for Work Scheduled)

< 2> EVM ( )

WBAC		
WBCWS		
WBCWP	(WEV)	
ACWP		

, WBCWP(Working Budgeted Cost for Work Performed

, ACWP

< 1>

EV 가 (BCWP)

. EV

가 가

WEV

(Working Earned Value)

EVM

EVM

(2) Earned Value Management

EVM ( )

EVM

( )

- 가

-

- EVM

-

-

, , 가

(risk management)

가

EVM

EVM - 가

가

1)

SOW(Statement of Work), (PPD: Past Performance Data)

(CWBS: Contract Work Breakdown Structure)

CWBS

. CWBS

가

(5)

가 ,

( ) ,

(FBS: Facility

Breakdown Structure)

(OBS: Organizational Breakdown Structure),

, ,

, ,

, ,

, ,

CWBS FBS(

), OBS( )

, ,

가 (cost variance), (graphs) EVM (schedule variance), 가

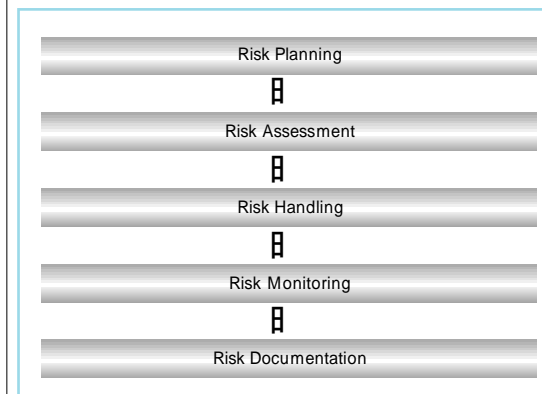
2) 가 EVM 가 EVM - 가 EVM

가 (2) 가 ( ) ( )

2) , ( )  
3) 5-10

EVM (CM: Construction Management) EVM CM EVM (cost account management) EVM CM EVM (CBS: Cost Breakdown Structure)

(3) EVM 가 , EVM 가 EVM EVMS ( ) , 가 가 EVM , EVMS EVMS EVMS 가 가 EVMS 가

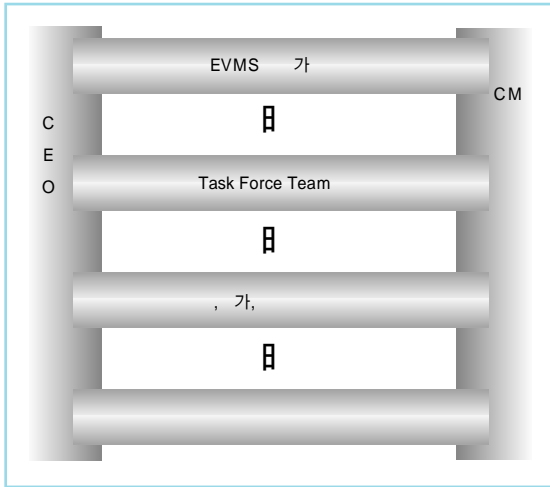


< 1> EVMS (risk planning), 가(risk assessment), (risk handling), (risk monitoring),

(risk documentation) 가 (high), (moderate), (low) < 1> PMBOK(Project Management Body Of Knowledge)<sup>(6)</sup> (risk identification), (risk quantification), (risk response development), (risk response control)

3. EVMS EVMS CM EVMS CM

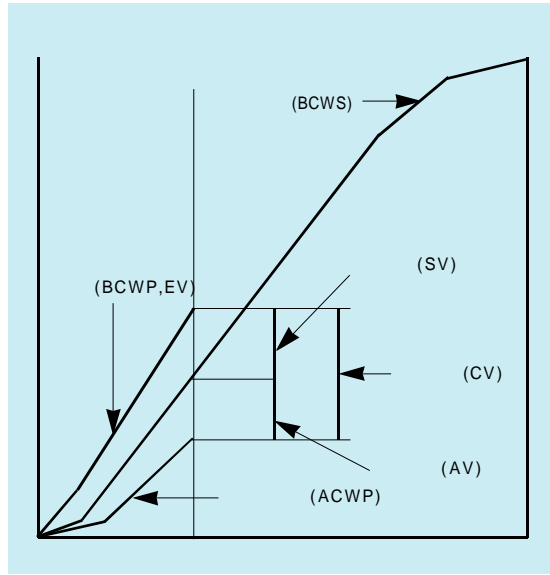
< 2> EVMS



< 2> EVMS

CV		SV	
+	+	가	,
+	-	가	,
-	+	,	가,
-	-	,	가,

CV = BCWP - ACWP    SV = BCWP - BCWS

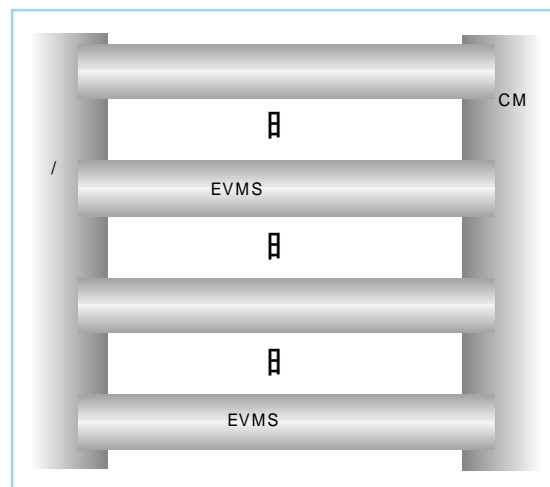


< 3> EVM

가 가 . EVMS (task force team)

EVMS . EVM  
 EVM  
 3> < 3> CV(Cost Variance, )  
 SV(Schedule Variance, ) (+)  
 가(  
 )  
 . CV SV

가  
 < 4> EVMS



< 4> EVMS

EVMS ( , )  
 EVMS ,  
 EVMS , VE  
 EVMS  
 가  
 가

EVMS  
 EVMS  
 (turnkey)  
 EVMS

EVMS  
 4.  
 EVMS , 가

EVM  
 가 , 가  
 가  
 EVMS  
 30  
 C/SCSC C/SPCS  
 (Cost/Schedule Planning and Control Specification)  
 EVMS  
 , EVMS

[1] Fleming, Q.W. & J.M. Coppelman, Earned Value Project Management, Project Management Institute, Pennsylvania, USA, 1996, p.3  
 [2] , 1999, EVMS , 1999 , Working Paper no.16, 1999  
 [3] , Earned Value Project Management System Project Coding System, CM , 1998  
 [4] DCMC, Earned Value Management System, Revision, June 2000, New EVM Onebook Chapter, <http://evms.dcmdw.dla.mil>  
 [5] , 1999 ( . )  
 [6] Duncan, W.R., A Guide to the Project Management Body of Knowledge, Project Management Institute, PA, USA, 1996, pp.111-121