

(RC)

| dhhan515@dreamwiz.com | 02)3433-7721

가 가

1.1
 (Shrinkage) (Creep),
 (Volumn Change)가
 (Movement)

1.2.1 (Construction Joint)
 (Production Capacity)

1.2.2 Movement(Functional) Joint
 (Volumn Change)

Expansion Joint
 Control Joint
 Shrinkage Strips
 Movement Joint

가 가
 가 (Expansion Joint)

1.2
 (Movement Control) 가

1.3
 (Contraction / Expansion)

(Movement)

1.4 (Construction Joint)

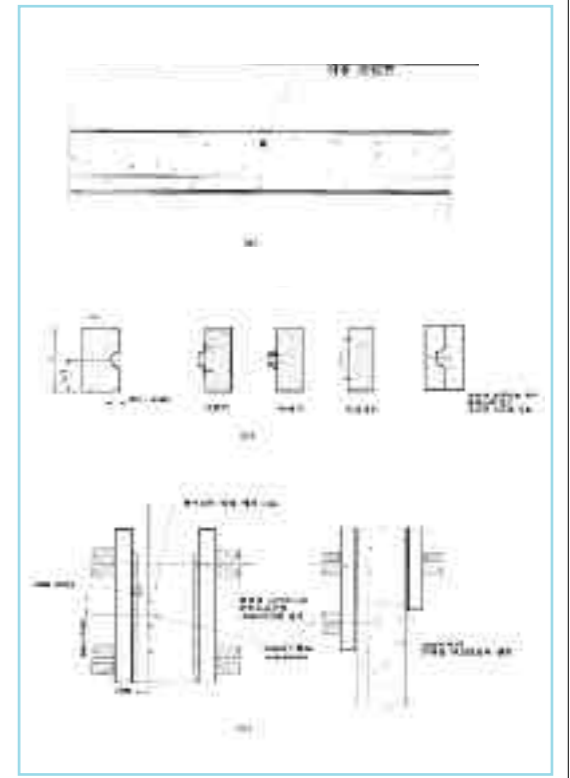
Well-Bonded Watertight Joint가

가 Dowel Bar 가

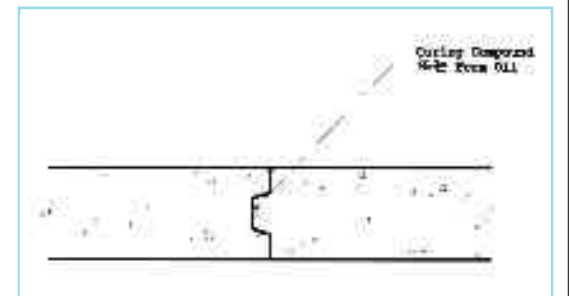
1/3 가

()

2
 , Drop Panel, Column
 Capital



[1] (a) : (b) Groove : (c)



[2] /Wall

1.5 Movement Joint

1.5.1 Expansion Joint

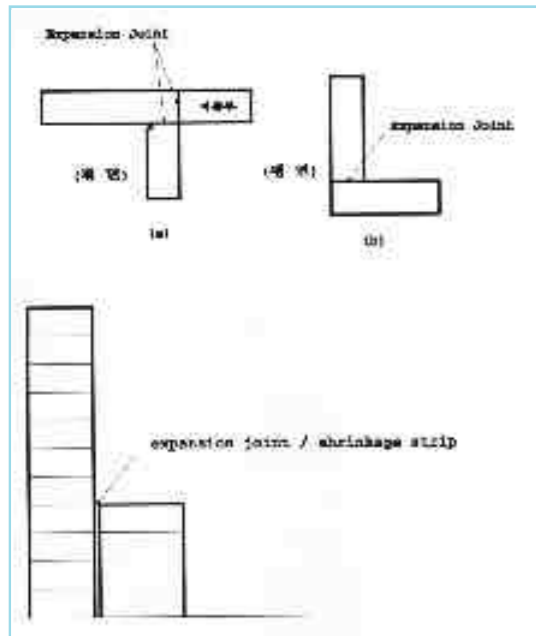
(Isolation / Seismic Joint).

Expansion Joint

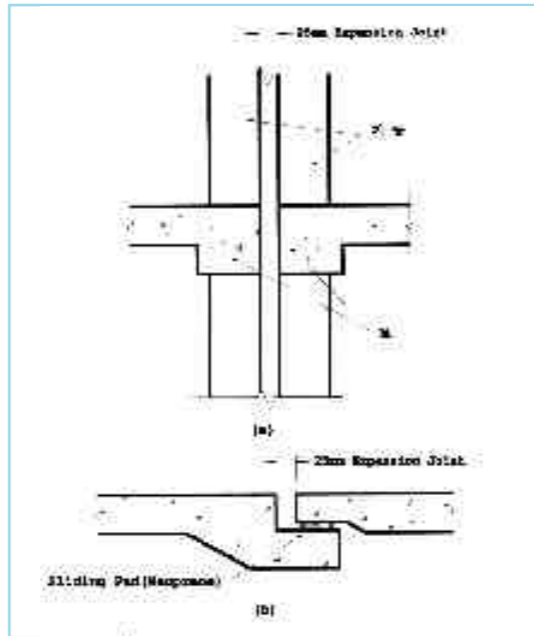
Expansion Joint

Expansion Joint 30ft(9.1m)

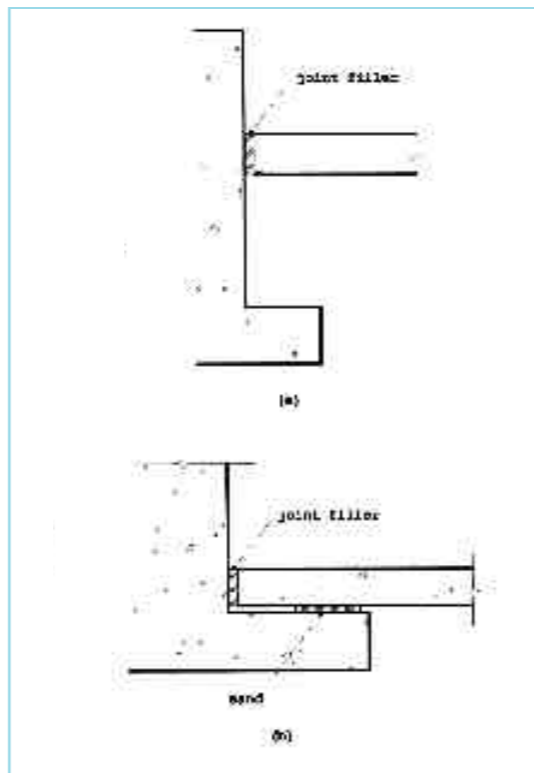
가 150ft(46m) ~ 200ft(61m)



[3] (a) (b) (c)



[4] Expansion Joint (a) / (b) (1/3 1/4)



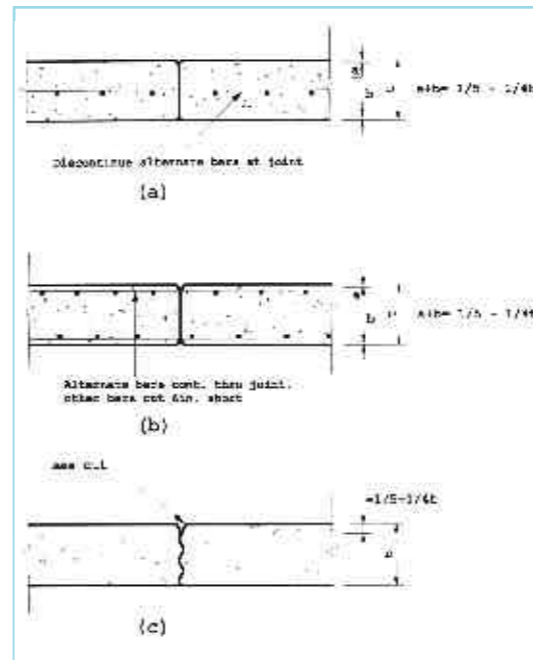
[5] Isolation (a) (b)

< 1> Expansion Joint (FHA, 1972)		
Heated	70 (21)	600ft(183m)
	70 (21)	400ft(122m) ~ 500ft(152m)
Unheated	70 (21)	300ft(91m)
	70 (21)	200ft(61m)

1.5.2 Control Joint

Control Joint

Control Joint



[6] Control Joint (a) 200mm Control Joint (b) 200mm Control Joint (c) Saw Out Joint

Slab On Ground(S.O.G.)

15ft(4.6m) ~ 25ft(7.6m)가

1:1 ~ 1.5: 1

1.5.3 Shrinkage Strips

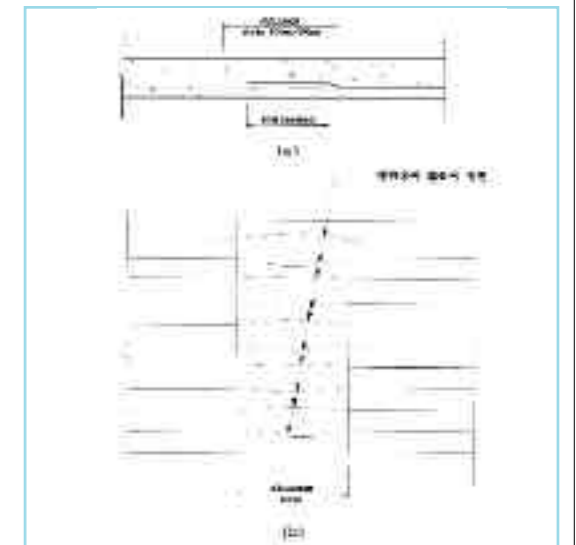
Shrinkage Strips

. Shrinkage Strips

100ft(31m) ~ 200ft(61m) , Strip

2ft(0.6m) ~ 3ft(0.9m)가 , Bay

가 2 ~ 4



[7] Shrinkage Strip (a) (b)