

# Technical Report

| 02)3433-7729 | E-mail : jhkang@mail.ssyenc.co.kr  
 | 02)3433-7731 | E-mail : mirrgon@mail.ssyenc.co.kr

1. 가 80 가

2. 가 [ 1 ] 가 가

[ 1 ] 가

(1) (Dead Load) (Live Load)

가 가600mm, 900mm

[ 2], [ 3 ]

([ 4 ])

(2) 가 (boring)

[ 1 ] 가		
A.		( , ) ( : 1m ) ( : , ) ( , , ) ( , )
	가	( , )
B.		( (2.3m), (2.1m) ) ( )
C.		(SPAN)
D.		( , , 가, )
		( , +Pile)
E.		( ) 가
		· ROCK ANCHOR (Dewatering) (BUTTRESS, SLURRY WALL )
F.	가	( 1 , 2 ) ( System) 가 , FLAT Slab
	FLAT Slab	( , )
G.	Joint	· Delay Joint(Shrinkage Strip)

[ 2 ] ( )				
		(mm)	(kgf/㎡)	(kgf/㎡)
100mm		-	-	15( )
	CON'C	100	2,300	230
		-		30
				275

[ 3 ] ( )				
		(mm)	(kgf/㎡)	(kgf/㎡)
600mm		75	2,300	173
		300	2,100	630
		125	2,000	250
	CON'C	100	2,300	230
				1,283
900mm		75	2,300	173
		300	2,100	630
		425	2,000	850
	CON'C	100	2,300	230
				1,883

[ 4 ] (2000, )		
		(kgf/㎡)
가.		400
		800
- 18		1,200
		1,000
가.		600
		1,000
- 18		1,600
		1,200
가.		1,200
		1,600
24		2,200 kgf/㎡

# Technical Report

24

[ 5] 가

[ 5]		
가		
( , )	가 가	
( )	가 가	

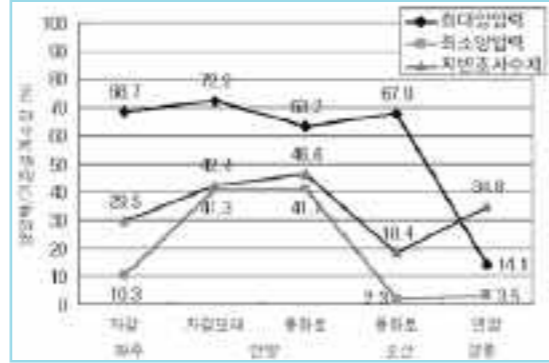
( , uplift pressure)

: (2 ), (De-watering)

: 1  
: 8 9  
: 3

[ 1] 가  
가 (70%),  
가

Dewatering



[ 1] ( )

2.2

가 30% ,  
15% 가 ,  
가

[ 6]		

가  
가

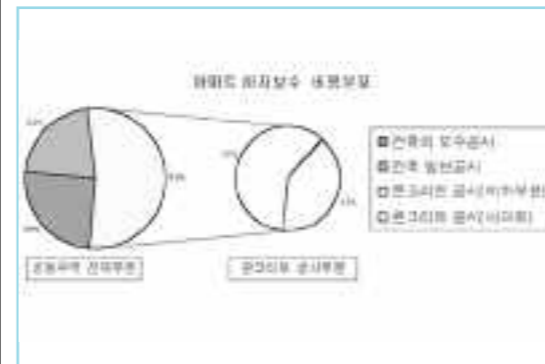
2.3 A/S

(1) A/S

, 90  
가  
가  
A/S 가

75%  
53% ,  
60%

( 30% )



[ 2] A/S ( )

( )

(2) ,  
1996 2001 6  
20

[ 7]

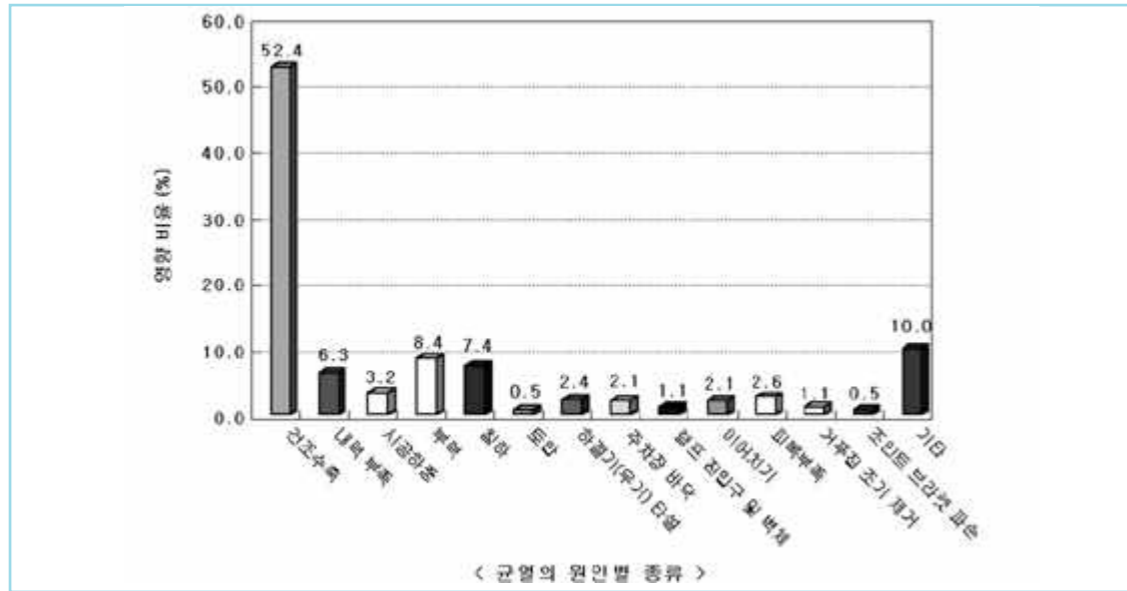
구분	1996	1997	1998	1999	2000	2001	2002	2003	2004	2005	2006	2007	2008	2009	2010	2011	2012	2013	2014	2015	2016	2017	2018	2019	2020	
관공리 전 공사(비교형)																										
관공리 전 공사(기타수신)																										

1) : :  
2)

[ 7]

[ 3]

# Technical Report



[ 3]

## 3.

(1)

4가

1 3

6 12×10<sup>4</sup>

4 15×10<sup>4</sup>

5m

3 6mm 가

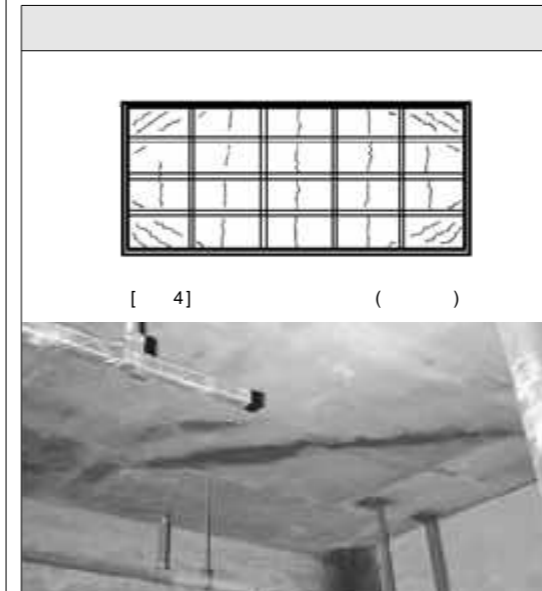
3 6mm

1 ~ 2mm/3 , 0.3 0.6mm/10

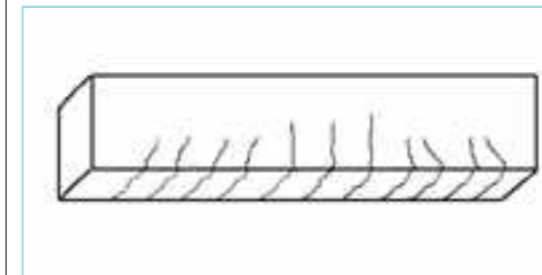
(2)

가

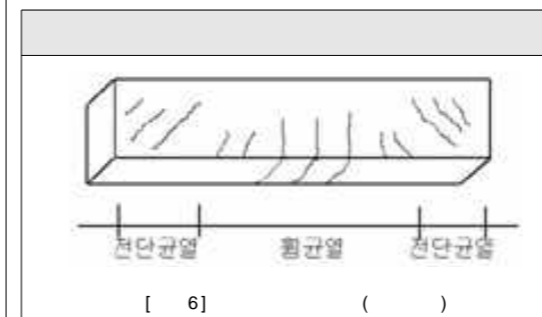
가



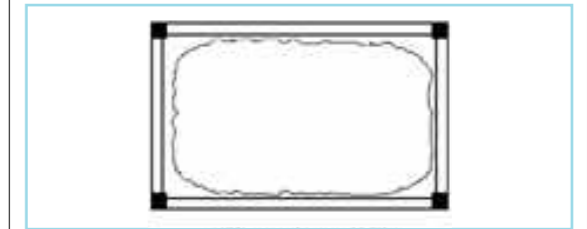
[ 4] ( )



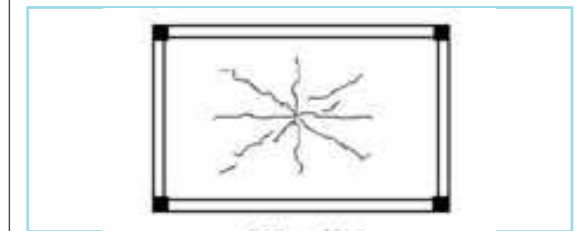
[ 5] ( )



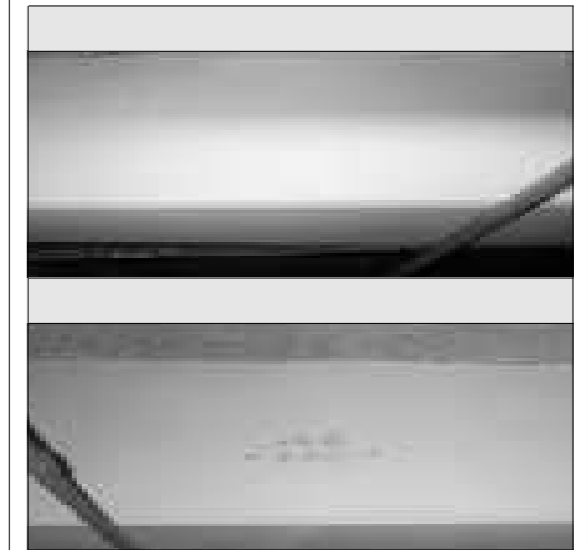
[ 6] ( )



[ 7] (a) ( )



[ 7] (b)



(3)

1m

1tonf/㎡

가 10m

10tonf/㎡

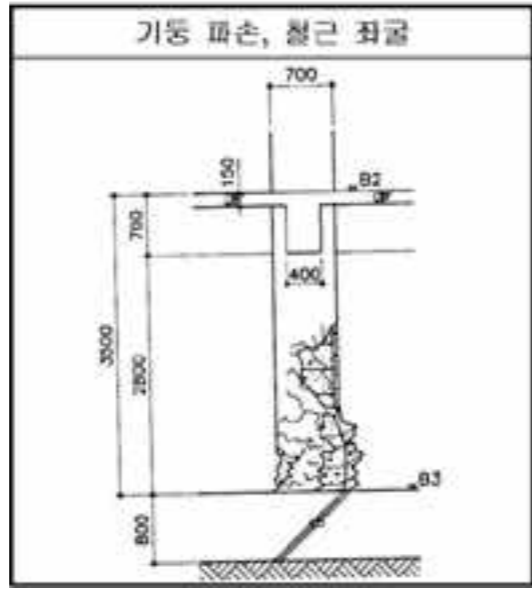
가 1tonf/㎡

가 , 10

가

# Technical Report

가  
가  
가  
( / )  
가  
가  
가  
X  
( [ 8] )



[ 8]



(4)



kgf/cm

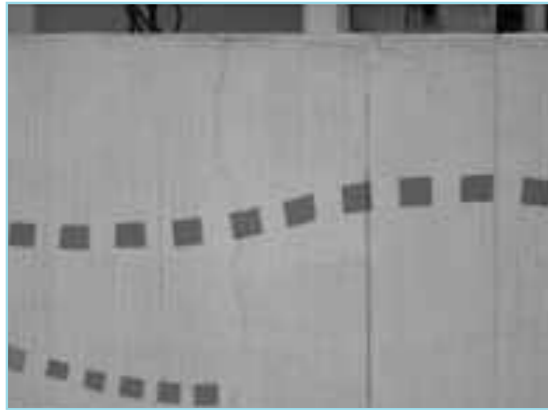
가 가

1,600 kgf/cm<sup>2</sup>  
2,000



30 50cm)

# Technical Report



## 4.1

가 50%

[ 1 ] (mm)						
	D10	D13	D16	D10	D13	D16
150	240	400	400	400	400	400
200	180	320	400	350	400	400
250	140	250	400	280	400	400
300	120	210	330	240	400	400

## 4.1

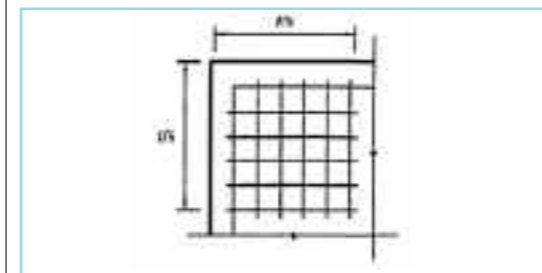
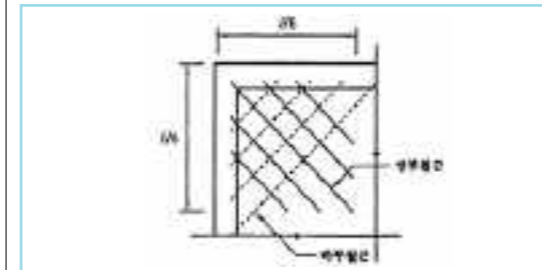
[ 8 ]		
1.	(W/C) : 40 ~ 50%	- ( ) - 가 - ( , 10 ~ 20%)
2.		- , : 0.1 ~ 0.4 kgf/m <sup>2</sup> hr (가 : 0.05 ~ 0.25 kgf/m <sup>2</sup> hr) - 70% ( 7 ) - ( 7 ) - (5 ~ 8m) ( , ) ( , )
3.		- 0.002, 40cm [ 1 ] - 1/5 [ 2 ] - Delay Joint (Expansion Joint )

## 4.2

[ 9 ]	
1.	( , ) - ( / J/S ) 가 ( ) , 가
2.	(1cm 5~10% ) ( ) - : D13 - SPACER, - ( )
3.	, 가 ( , )
4.	( , , ) ( , , )

## [ 2 ]

Welded Wire Fabric



[ 9 ]

( ( ) )  
,  
, )

## 4.3

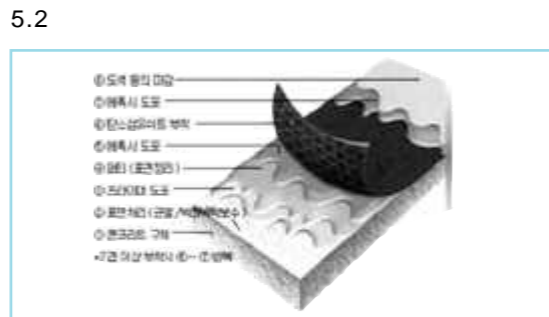
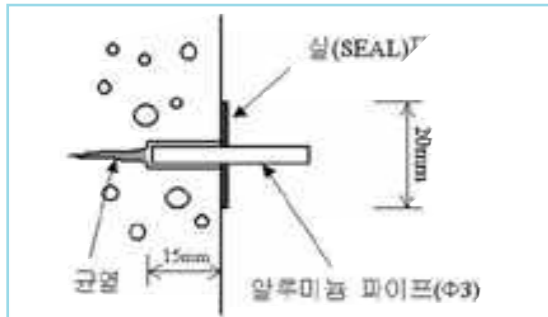
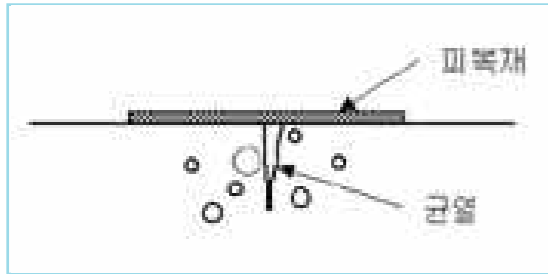
[ 10 ]	
1.	( , ) ( , )
2.	
3.	(Rib Lath, )

5. ,  
, , ( )  
, 가

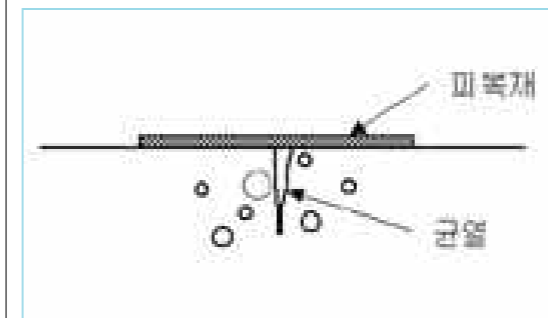
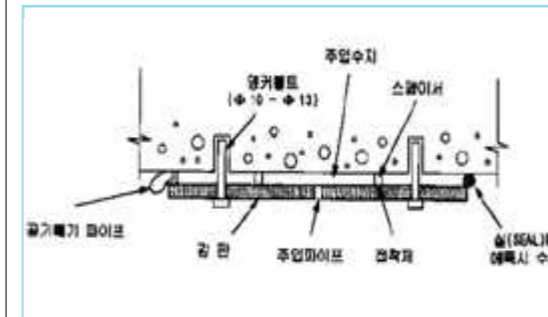
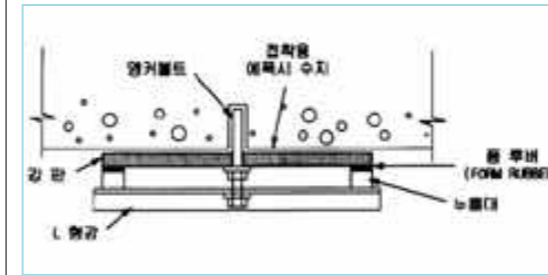
## 4.4

[ 11 ]		
1.	.	
2.	2	가 가
3.	PC	가
4.	DECK SYSTEM	가 가
5.	POST-TENSION	가 가

## 5.1 ( )



## 5.3



## 6.

가

1. , 1996 - 2001
2. , 2000
3. , 2000.7
4. , 1994
5. , 2000
6. , 2000
7. , 1999
8. , 1997