

Slurry Consolidometer
, Calibration Chamber
System

가 Chamber
가 52.5cm, 81.5cm
가
가

Calibration Chamber System			
Purdue (1986)	0.2m	0.33m	
Clarkson (1989)	0.52m	0.81m	
Cornell (1991)	1.4m	2.1m	
Sheffield (1991)	0.4m	0.35m	
Louisiana (1993)	0.52m	0.81m	
(2002)	1.2m	1.0m	가

3. Korea University Calibration Chamber System (KUCCS)

KUCCS System 가
가 Stress
history 가
, Piezocone

Slurry Consolidometer Calibration
Chamber, Control panel, Data acquisition system,
Piezocone,

KUCCS 가
가
Size effect
Boundary effect
가
Chamber , 1
Piston 2
가
, KUCCS 1

2 Piston
Piston
Inner cell Outer cell

Double Wall

panel

Calibration Chamber

가

LabView Program
KUCCS

3.1 Slurry Consolidometer
Slurry Consolidometer 가
, Slurry

가
Method
Slurry



가
50t
Piston Plate

가 Piston Plate Rod

Piston Plate LVDT

3.2 Calibration Chamber

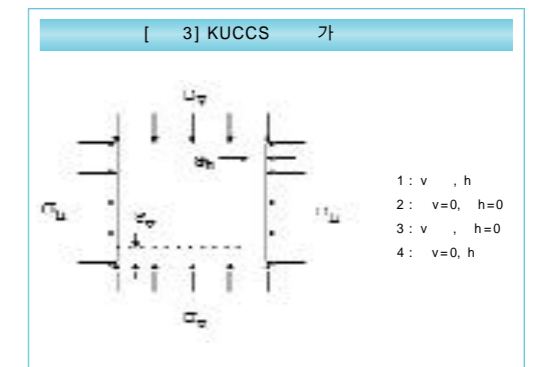
Calibration Chamber
ber Slurry Consolidometer

, 1
가



ko
Piezocone /
Calibration Chamber Piston Cell
Double Chamber Cell
Piston Cell
, Chamber Cell
Cell
Control
Panel E/P Transducer Sensym
Transducer 가

Double Wall
ko , KUCCS
가



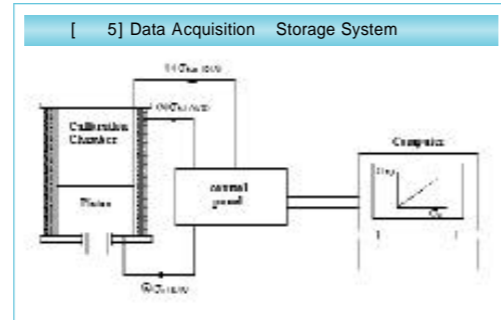
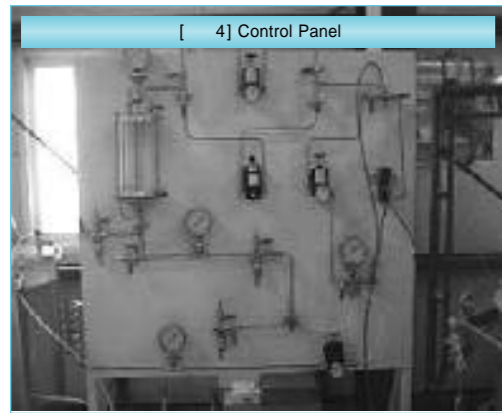
Calibration Chamber

가
가

10 , Top Plate
가
Plate Piezometer , Base
가

Back pressure 가
Regulator 가

3.3 Control Panel Data Acquisition System



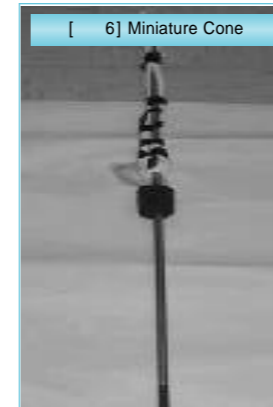
Labview Board Program
Labview Board
가 Windows

Control Panel Slurry Consolidometer
Calibration Chamber
가

2 E/P Transducer 3
Sensym Transducer, 3 Regulator
E/P Transducer Piston Cell Double
Chamber Cell 가
가
Sensym Transducer Double Chamber
Cell 가
ko
Chamber Cell

3.4 Piezocone
Piezocone
Reference Cone
Boundary effect
Calibration Chamber 가
가

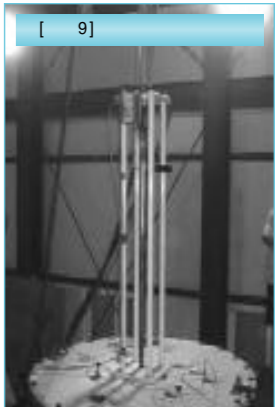
Miniatur
Cone
Minia-tu
Cone
가



KUCCS
Piezocone
GeoTech
U2 Refer
ence Cone Fugr
B.V.
U2 Minia-
ture Cone . Piezo-cone
가60 , Re-ference Cone
10cm Miniature Cone 1cm

0.4cm/sec ~ 4.0
/sec

0.4cm/sec



가 2.0cm/sec
가

3.5

가
Piezocone
/
KUCCS
1.0
m,



3.6

가 가



Calibration Chamber System(KUCCS)
 Large System
 Deformation Formulation
 Calibration Chamber System
 Piezocone / (KU-33)
 4.3.2
 , Chen & Mayne(1994) Stress path
 Konrad & Law(1987) Yield Criteria
 , Yield Criteria Stress Path
 uoct ushear
 가

가 System
 , KUCCS 가 가
 가

Anderson, W. F., Pyrah, I. C. and Fryer, S. J. (1991), "A Clay Calibration Chamber for Testing Field Devices", *Geotechnical Testing Journal*, GTJODJ, Vol. 14, No.4, pp. 440-450.
 Campanella, R. G. And Vaid, V. P.(1992)," A simple K0 Triaxial cell "; *Canadian Geotechnical Journal*, Vol. 9, pp. 249.
 Huang, A. B., Holtz, R. D. and Chameau, J. L. (1988), " A Calibration Chamber for Cohesive Soils ", *ASTM Geotechnical Testing Journal*, Vol. 11, No.1, pp.30-35.
 Krizek, R. J. and Sheeran, D. E.(1970)," Slurry Preparation and Characteristics of Samples Consolidated in Slurry Consolidometer ", Technical Report No. 2, Contract No.DACW339-70-C-0053, U.S. Army Corps of Engineer, Water ways Experiment Station, Vicksburg, MS,pp.1-5.
 Lim B. (1999), " Determination of Consolidation Characteristics in Fine Grained Soils Evaluated by Piezocone Tests "; Ph.D. Dissertation, Department of Civil and Environmental Engineering, Louisiana State University.
 Houlby, G. T. and Hitchman, R. (1988)," Galibration Chamber Tests of a Cone Penetrometer in Sand "; *Geotechnique*, Vol.38, No.1, pp. 39-44.
 McManus, K. J. and Kulhawy, F. H.(1991), " A Cohesive Soil for Large0Size Laboratory Deposits "; *Geotechnical Testing Journal*, GTJODJ, Vol. 14, No. 1, pp. 26-34.
 McManus, K. J. and Kulhawy, F. H.(1993)," Preparation of Large-Size Laboratory Deposits of Cohesive Soil "; *Geotechnical Testing Journal*, GTJODJ, Vol.16, No.3, pp. 372-383.
 Sheeran, D. E. and Krizek, R. J.(1971)," Preparation of Homogeneous Soil Samples by Slurry Consolidation "; *Journal of Materials*, Vol. 6, No. 2, pp. 356-373.
 Sheeran, D. E. and Krizek, R. J.(1970)," Slurry Preparation and Characteristics of Samples Consolidated in Slurry Consolidometer "; Technical Report No. 2, Contract No.DACW39-70-C-0053, U.S. Army Corps of Engineer, Water ways Experiment Station, Vicksburg, MS,pp.1-5.
 Voyiadjis, G. Z., Kurup, P. U., and Tumay, M. T.(1993), " Preparation of Large-Size Cohesive Specimens for Calibration Chamber Testing"; *Geotechnical Testing Journal*, GTJODJ, Vol. 16, No.3, pp. 339-349.

5.

Calibration Chamber System Piezocone /